

ECW

Enterprise Converged Workspace

PBX
VOICE
DATA
WiFi
SECURITY



Wireless office in a box

Enterprise Converged Workspace and Benefits

The ECW is a cutting edge multi-service business gateway powered by both 3G/4G LTE cellular, and land line networks. Delivering voice and data services instantly via wireless and/or traditional wireline service, the ECW integrates all your communications needs into one appliance. It's simple. It's your office-in-a-box.

All-in-one voice and data solution for small and medium business environments over 3G and 4G cellular networks

- Full featured Asterisk-based IP-PBX, Router, FMC Gateway, WiFi, and Auto fail-over between wireline and wireless (if both networks are present)
- Multiple connectivity options via CDMA, EVDO, 4G LTE, and wireline (Ethernet ISP, and POTS)
- One integrated device. Simple and reliable
- No more waiting, immediate connectivity via

Applications

Small / Medium Size Office



Temporary Office



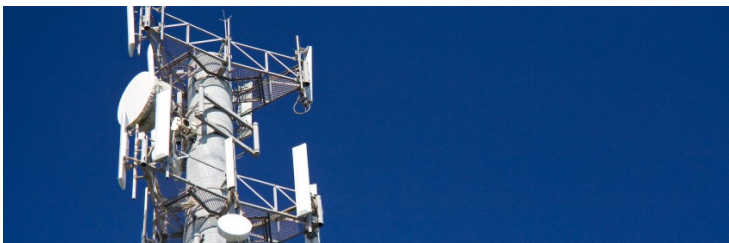
Branch office



Rapid deployment



Business Continuity



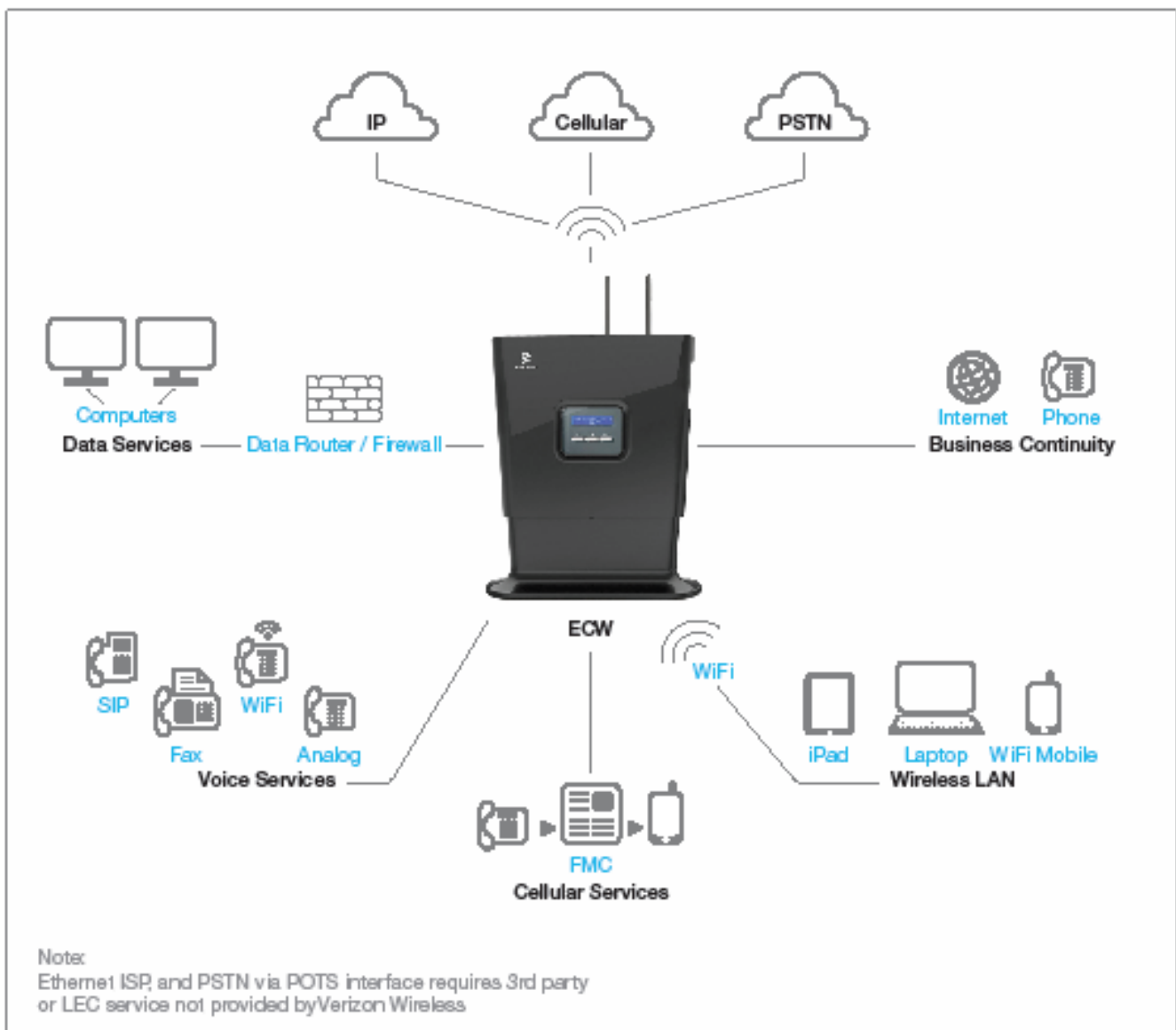
Cut the Cord



Main Features

- Full featured Asterisk IP-PBX, including voice mail, auto attendant, unified messaging, music on hold
- 4 LAN / 1 WAN Port (Ethernet ISP subscription required)
- Up to 2 programmable FXS/FXO + 1 FXS
- 3 cellular modules (2 Verizon CDMA voice, 1 Verizon 4G LTE data)
- 2 x CDMA Expansion Packs available (Not Femto cell)
- VoIP line access and SIP trunking capable (Network server not provided)
- Internet access via the Verizon 4G LTE Network or EVDO network
- Automatic handover and fallback capabilities
- WiFi 802.11 b/g/n access point
- Firewall protection
- FAX T30, T38 (where available)
- Remote/local web based management
- TR-069 support
- Advanced QoS

System overview



Main Features

Cellular Service

Voice: 2 x CDMA

Data: 4G LTE/EVDO

Voice is expandable via CDMA Expansion Packs which provide 2 additional CDMA lines per expansion pack (See product overview below)

Note: Cellular services do not improve mobile phone coverage in-building.

ECW is not a Femto Cell

Management and control

HTTP web server, TFTP, RFC 1350

Web-based management; graphic network map

TR-069 support

Informative LCD display

Automatic IP address detection

Interfaces

Up to 2 programmable FXS/FXO, 1 fixed FXS

Up to 3 cellular lines

4 LAN & 1 WAN, RJ-45, 10/100 Mbps

Wireless LAN, WiFi 802.11b/g/n

USB 1.1 / 2.0 host

VoIP

Note: VoIP service not offered by Verizon Wireless.

Requires 3rd party service.

Up to 4 VoIP SIP-trunks

Registers SIP phones and soft phones

Codecs: G.711 (μ /A-Law), G.729

Echo canceller: G.168-2002 (up to 128 msec)

Full duplex

VPN

VPN Passthrough supported

IPSEC VPN tunnelling

General parameters

Power supply: 110/220V; external power

Adapter with 12V DC 5A output

Operating temperature: 0°C - + 40°C / 32°F - 104°F

Humidity: 5% - 95%

Wireless LAN

Security: WEP, WPA, WPA2,

Encryption: AES, TKIP

Web authentication

Hardware

Dimensions (H*W*D):

Desktop/wall mount 338*331*55mm

Weight: desktop - 1.6kg

Mounting: wall/desktop

IP support

IP, TCP, UDP, ICMP, ARP, RARP, PPP

Networking applications

DHCP, PPPoE, PPTP, L2TP, DNS

LAN / WAN switching or routing

Firewall and security

ICSA certified, pre-defined security policies, stateful packets inspections, access control lists, MAC address filtering, advanced NAT, advanced filtering rules, VPN-IPSEC

Regulatory compliance

EMC: EN-55022, AS/NZS CISPR 22:2006, CFR 47, FCC, EN 55024, ETSI EN 301 489-4 V1.3.1, ETSI EN 301 489-7 V1.2.1, ETSI EN 301 489-1 V1.8.1. **Safety:** 60950-1, RoHS

Product Overview

